

GUJRI INDUSTRIES INTERNATIONAL (P) LTD

AN ISO 9001:2015 CERTIFIED COMPANY.



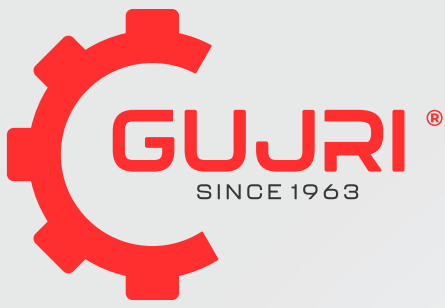
A HOUSE OF **SHEET METAL MACHINERY.**



MANUFACTURERS & EXPORTERS :

- ▶ POWER PRESSES
- ▶ PNEUMATIC CLUTCH POWER PRESSES
- ▶ HYDRAULIC SHEARING MACHINES
- ▶ HYDRAULIC ROTARY SHEARING
- ▶ HYDRAULIC SHEET BENDING MACHINES
- ▶ SHEET ROLLING MACHINES
- ▶ CIRCLE CUTTING MACHINES
- ▶ DRUM DEHEADER MACHINES
- ▶ DRUM FLATTENING MACHINES
- ▶ SPECIAL PURPOSE MACHINES





Your Belief, Our Promise



Gujri Industries International Pvt Ltd is formed by a team of leading professionals and technocrats from machine tool industry. The purpose is to manufacture machine tools with latest technology to meet the current expectations of the industry in terms of higher performance by supplying intelligent machines and backing up with the efficient spare and service management.

The offered range has been made from the usage of best quality raw material and is availed to the customers at the most comprehensive and market leading price range. We have made sure that the complete range is in compliance with the standards of the industry, and this has been kept possible through our expert surveillance.

Offering the optimum performance that they are perceived of, these heavy-duty presses and machines have been widely appreciated for their extensive features such as dimensional accuracy, optimum performance, longer service life, and easy installation. Customers can easily avail from us a wide range that has been made to cater to their variegated needs.

Our business endeavors are supported by a proficient team which is well acknowledged with the production, packaging, and distribution processes. Our team works with proper co-ordination with each other and thus serves the best in terms of quality, packaging, and distribution.

The utmost motto of our company is 100% client satisfaction, which leads to the initiation and execution of super quality sheet metal machinery to all over the globe.



OUR VISION

We dedicate ourselves to serve the customer to their satisfaction and assure our utmost consideration at all times. All our machines meet highest national as well as international norms and standards. Over a period of time, we have built up a lot of goodwill and reputation. Customer satisfaction is our prime motive so we always strive for timely delivery and efficient service.



OUR MISSION

To understand the needs of each customer and meet their expectations all the time, and delivering a consistent experience beyond his expectations. Providing a working environment where our employees at all levels are responsive to customer needs, and can professionally and efficiently handle all issues.



CORE VALUES

Intending to serve the clients which has made us extremely dedicated to our core values. We are also passionate about our work. Passion helps us a lot in delivering high quality at competitive prices. Our intention solely is to exaggerate an organization built on integrity, honesty, and trust.

QUALITY POLICY

The Company is having all in house plant facilities with qualified workforce and professionals. We have all the testing facilities to check the quality of the end product to produce quality machines with more perfection, precision & accuracy.

Quality is our prime concern hence we pay greater emphasis on maintaining highest standards in our production process. The motive of our company is to serve the best to our customers' this is what makes **GUJRI** different from any other machines.

Quality checking is another important aspect of our organization and we follow stringent procedures throughout the production process that help in offering products in line with international quality standards.



INFRASTRUCTURE



Our organization is backed by a state-of-the-art manufacturing facility spread across a large area. This unit is well-equipped with all the necessary amenities required for the manufacturing process. We continuously upgrade our products who keep peace with the local as well as international market We have segregated this unit into different divisions such as design unit, engineering area and others.

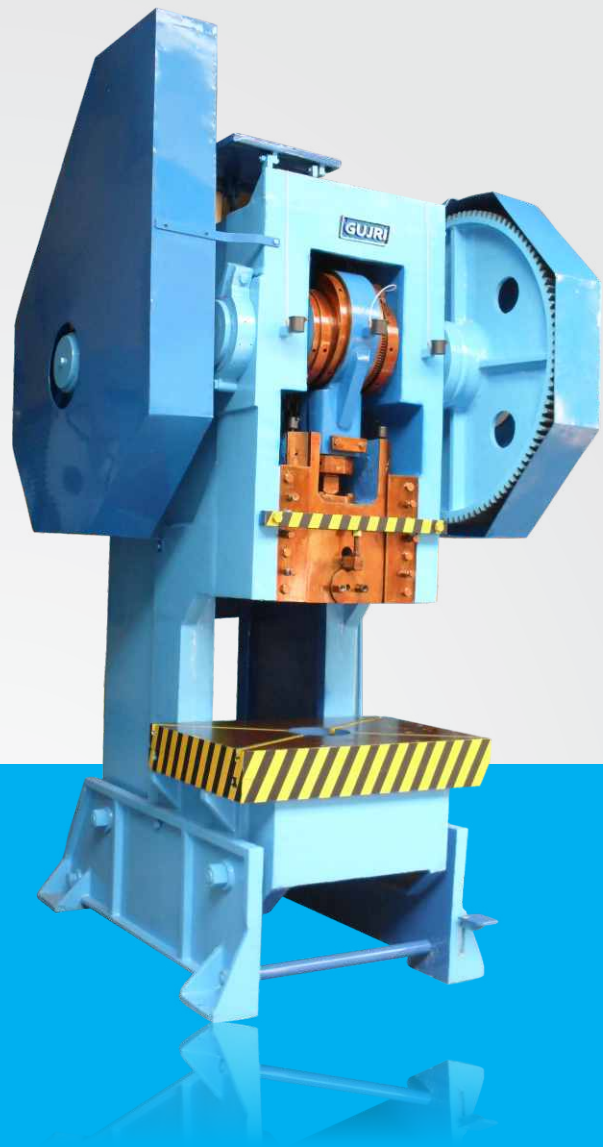
Our manufacturing unit is installed with various technologically advanced machinery and equipment that enable us in the effectual production.

IN HOUSE MANUFACTURING FACILITY

- | Shaper Machines
- | Lathe Machines
- | Plano Miller
- | Boring Machines
- | Hobbing Machines
- | ARC Welding Sets
- | CNC Machines
- | Profile Cutter
- | Drill & Tapping Machines
- | Band Saw Machines
- | Latest Micro Meters
- | Slotter Machines
- | Milling Machines
- | MIG Welding Machines
- | Drill Radial
- | Generator Sets



“C” TYPE



POWER PRESS

TECHNICAL SPECIFICATIONS

“WE ALSO DESIGN & MANUFACTURE PRESSES AS PER CUSTOMER REQUIREMENT.”

MODEL	5 TON	10 TON	20 TON	30 TON	50 TON	75 TON	100 TON	150 TON	200 TON
BED SIZE	280×355	310×435	355×565	410×615	510×720	565×820	640×910	720×970	765×1100
BED TO RAM	180	230	270	310	335	385	455	565	600
BOLSTER THICKNESS	58	58	63	63	70	78	83	90	102
CRANK SHAFT DIA	65	75	85	100	120	135	170	185	204
STROKE LENGTH	45	52	63	83	95	110	115	127	140
GEAR DIA	355	455	560	610	660	760	910	1015	1220
FLY WHEEL DIA	425	490	620	680	735	840	910	1065	1150
PUNCH BORE	25	25	28	32	39	45	51	56	63
FLOOR TO TOP OF BED	800	800	800	800	800	800	800	800	800
STROKES / MINUTE	70	70	65	60	60	55	55	45	45
POWER REQUIRED HP / RPM	1/1440	15/1440	2/1440	3/1440	5/1440	7.5/1440	10/1440	15/1440	20/1440
APPOX WEIGHT IN KG	600	850	1350	1800	2550	4100	5200	7500	12000

“PILLAR” OR “H” TYPE



POWER PRESS

TECHNICAL SPECIFICATIONS

“WE ALSO DESIGN & MANUFACTURE PRESSES AS PER CUSTOMER REQUIREMENT.”

MODEL	10 TON	20 TON	30 TON	50 TON	75 TON	100 TON	150 TON	200 TON	250 TON	300 TON	400 TON
BED SIZE	306X365	355X410	410X460	460X510	522X575	586X640	640X690	765X820	865×920	915X915	1000X1000
BED TO RAM	230	270	310	335	385	455	565	600	612	765	815
BOLSTER THICKNESS	57	63	63	70	78	83	90	102	108	120	125
CRANK SHAFT DIA	75	85	100	120	135	170	185	204	230	254	286
STROKE LENGTH	52	63	83	95	110	115	127	140	152	178	210
GEAR DIA	455	560	610	660	760	910	1015	1220	1270	1320	1420
FLY WHEEL DIA	535	665	765	841	920	1070	1148	1275	1326	1370	1475
PUNCH BORE	25	28	32	38	45	51	56	63	63	70	75
FLOOR TO TOP OF BED	800	800	800	800	800	800	800	800	800	800	800
STROKES / MINUTE	70	65	60	60	55	55	50	45	45	45	40
POWER REQUIRED HP / RPM	1.5/1440	2/1440	3/1440	5/1440	7.5/1440	10/1440	15/1440	20/1440	25/1440	30/1440	40/1440
APPOX WEIGHT IN KG	800	1100	1550	1900	2850	3800	5300	8500	10000	13500	19000

PNEUMATIC “C” TYPE



TECHNICAL SPECIFICATIONS

“WE ALSO DESIGN & MANUFACTURE PRESSES AS PER CUSTOMER REQUIREMENT.”

MODEL	5 TON	10 TON	20 TON	30 TON	50 TON	75 TON	100 TON	150 TON	200 TON
BED SIZE	280x355	310x435	355x565	410x615	510x720	565x820	640x910	720x970	765x1100
BED TO RAM	180	230	270	310	335	385	455	565	600
BOLSTER THICKNESS	58	58	63	63	70	78	83	90	102
CRANK SHAFT DIA	65	75	85	100	120	135	170	185	204
STROKE LENGTH	45	52	63	83	95	110	115	127	140
GEAR DIA	355	455	560	610	660	760	910	1015	1220
FLY WHEEL DIA	425	490	620	680	735	840	910	1065	1150
PUNCH BORE	25	25	28	32	39	45	51	56	63
FLOOR TO TOP OF BED	800	800	800	800	800	800	800	800	800
STROKES / MINUTE	70	70	65	60	60	55	55	45	45
POWER REQUIRED HP / RPM	1/1440	15/1440	2/1440	3/1440	5/1440	7.5/1440	10/1440	15/1440	20/1440
APPOX WEIGHT IN KG	600	850	1350	1800	2550	4100	5200	7500	12000

CROSS SHAFT



POWER PRESS

TECHNICAL SPECIFICATIONS

"WE ALSO DESIGN & MANUFACTURE PRESSES AS PER CUSTOMER REQUIREMENT."

CAPACITY TONS	32	40	63	80	100	160	200	250
BOLSTER L-RXF-B	630x400	800x450	850x500	960x570	1000x625	1120x650	1250x800	1250x800
SLIDE AREA L-RXF-B	350x250	400x325	500x400	500x400	625x425	700x590	875x775	900x775
DAY LIGHT (SUAU)	330	340	400	420	450	560	650	675
STROKE LENGTH FIX	60	60	100	100	125	160	200	200
STROKE LENGTH (ADI)	8-60	8-60	8-100	8-100	8-125	8-160	8-200	8-200
SLIDE ADJUSTMENT	63	63	70	70	80	100	100	125
SHUT HEIGHT (SDAU)	270	280	300	320	325	400	450	475
NOS OF SLIDE STROKES (SPM)	50	50	50	50	45	40	40	35
FLY WHEEL ENERGY (KJ)	4.4	8	16.75	20	25	55	70	80
HEIGHT FROM FLOOR TO TOP	800	850	856	850	850	900	900	900
MAIN MOTOR (HP)	3	5	7.5	7.5	10	20	20	25

HYDRAULIC SHEARING MACHINE



SHEARING MACHINE

FEATURES

- RIGIDLY WELDED, MONO BLOCK STEEL FRAME FOR MINIMUM DEFLECTION UNDER FULL LOAD.
- NOISELESS OPERATION AND LEAST IMPACT LOADS ON BLADES AND FOUNDATIONS.
- INTERNATIONAL QUALITY HYDRAULIC COMPONENTS WITH SPECIALLY DESIGNED COMPACT MANIFOLDS GIVES SMOOTH, SILENT AND JERK LESS OPERATION.
- INTERNATIONAL QUALITY BRANDED ELECTRICAL COMPONENTS ENSURES TROUBLE FREE OPERATION OVER A PERIOD OF TIME.
- MOVABLE FOOT SWITCH TO OPERATE THE MACHINE FROM CONVENIENT POSITIONS.
- CYLINDERS FROM HIGH QUALITY FORGED STEEL AND ARE PRECISELY HONED. PISTONS ARE HARD CHROMED FOR LONGER LIFE.



MODEL	MACHINE SIZE	CUTTING LENGTH	CUTTING M.S. (MM)	CUTTING S.S. (MM)	RACK ANGLE MAX.	RACK ANGLE MIN.	MINIMUM STROKE	STROKE PER MINUTE	HOLD DOWNS	HOLDING FORCE KGS	MOTOR HP	DIMENSION MM (LXWXH)	APPROX. WEIGHT
GJR-1502	1500X2	1500	2/2	0,6/1	1°15	0,5-3"	25	25	5	1200	3	2200 X1300 X 1850	1350
GJR-2502	2500X2	2500	2/2	0,6/1	1°37	0,5-3"	20	20	8	1600	5	3000 X 1300 X 1850	2100
GJR-1504	1500X4	1500	3/4	2/3	1°37	0,5-3"	23	13	5	1600	5	2250 X 1300 X 1850	2100
GJR-2004	2000X4	2000	3/4	2/3	1°37	0,5-3"	19	10	9	2000	5	2750 X 1300 X 1850	2500
GJR-2504	2500X4	2500	3/4	2/3	1°37	0,5-3"	18	10	13	2300	5	3200 X 1850 X 1950	3500
GJR-3004	3000X4	3000	3/4	2/3	1°37	0,5-3"	15	9	16	2500	5	3700 X 1850 X 1950	4200
GJR-4004	4000X4	4000	3/4	2/3	1°37	0,5-3"	12	6	20	3200	7.5	4700 X 1300 X 2250	5500
GJR-1506	1500X6	1500	4/6	3/4	1°37	0,5-3"	23	13	5	4500	5	2250 X 1850 X 2050	3500
GJR-2006	2000X6	2000	4/6	3/4	1°37	0,5-3"	21	12	9	6200	7.5	2750 X 1850 X 2050	3600
GJR-2506	2500X6	2500	4/6	3/4	1°37	0,5-3"	19	10	13	8000	7.5	3300 X 2250 X 2400	4500
GJR-3006	3000X6	3000	4/6	3/4	1°37	0,5-3"	19	10	16	10000	10	3700 X 2250 X 2400	5500
GJR-4006	4000X6	4000	4/6	3/4	1°37	0,5-3"	15	6	20	12000	10	4700 X 2250 X 2400	7500
GJR-5006	5000X6	5000	4/6	3/4	1°37	0,5-3"	11	4	24	15000	10	5700 X 1900 X 2750	9000
GJR-6006	6000X6	6000	4/6	3/4	1°37	0,5-3"	10	3	28	15000	10	6700 X 1900 X 2850	11500
GJR-1508	1500X8	1500	6/8	4/6	1°45	0,5-3"	21	12	8	6500	10	2250 X 1900 X 2100	4000
GJR-2008	2000X8	2000	6/8	4/6	1°45	0,5-3"	21	11	11	6500	10	2750 X 1900 X 2100	4300
GJR-2508	2500X8	2500	6/8	4/6	1°45	0,5-3"	18	9	13	8500	15	3300 X 2250 X 2500	5500
GJR-3008	3000X8	3000	6/8	4/6	1°45	0,5-3"	16	8	16	10800	15	3800 X 2250 X 2500	6800
GJR-4008	4000X8	4000	6/8	4/6	2"	0,5-3"	22	6	20	13600	20	4800 X 2250 X 2500	8100
GJR-5008	5000X8	5000	6/8	4/6	2"	0,5-3"	18	4	24	16500	20	5700 X 2100 X 2500	10000
GJR-6008	6000X8	6000	6/8	4/6	2"	0,5-3"	14	3	28	19500	20	6700 X 2100 X 2500	13000
GJR-1510	1500X10	1500	8/10	6/8	2"	0,5-3"	23	13	8	10500	10	2250 X 2050 X 2200	4750
GJR-2010	2000X10	2000	8/10	6/8	2"	0,5-3"	17	9	11	12000	15	2750 X 2050 X 2200	6000
GJR-2510	2500X10	2500	8/10	6/8	2"	0,5-3"	17	9	13	16500	20	3300 X 2350 X 2600	7000
GJR-3010	3000X10	3000	8/10	6/8	2"	0,5-3"	15	8	16	18500	20	3800 X 2350 X 2600	7600
GJR-4010	4000X10	4000	8/10	6/8	2"	0,5-3"	16	4	20	23000	20	4800 X 2350 X 2800	10100
GJR-5010	5000X10	5000	8/10	6/8	2"	0,5-3"	12	3	24	27000	25	5750 X 2400 X 2900	13000
GJR-6010	6000X10	6000	8/10	6/8	2"	0,5-3"	8	2	28	31000	25	6750 X 2500 X 3100	16000
GJR-1513	1500X13	1500	10/13	8/10	2"	0,5-3"	18	10	8	10500	15	2250 X 2050 X 2300	5400
GJR-2013	2000X13	2000	10/13	8/10	2"	0,5-3"	15	8	11	13000	15	2750 X 2050 X 2300	6500
GJR-2513	2500X13	2500	10/13	8/10	2"	0,5-3"	13	7	13	17500	20	3300 X 2500 X 2600	7500
GJR-3013	3000X13	3000	10/13	8/10	2"	0,5-3"	12	7	16	20000	20	3800 X 2500 X 2600	9500
GJR-4013	4000X13	4000	10/13	8/10	2"	0,5-3"	13	6	20	25000	25	4800 X 2500 X 2600	11500
GJR-5013	5000X13	5000	10/13	8/10	2"	0,5-3"	10	5	24	30000	30	5750 X 2500 X 2800	14500
GJR-6013	6000X13	6000	10/13	8/10	2"	0,5-3"	8	3	28	35000	30	6750 X 2500 X 3100	22000
GJR-2016	2000X16	2000	13/16	10/13	2"	1-3"	15	8	11	16000	20	2750 X 2200 X 2500	9000
GJR-2516	2500X16	2500	13/16	10/13	2"	1-3"	13	7	13	20000	25	3350 X 2600 X 2800	10000
GJR-3016	3000X16	3000	13/16	10/13	2"	1-3"	11	6	16	25000	25	3800 X 2600 X 2800	12000
GJR-4016	4000X16	4000	13/16	10/13	2"	1-3"	10	4	20	30000	30	4800 X 2600 X 2900	16000
GJR-5016	5000X16	5000	13/16	10/13	2"	1-3"	9	4	24	35000	40	5750 X 2600 X 3100	20000
GJR-6016	6000X16	6000	13/16	10/13	2"	1-3"	7	3	28	40000	40	6750 X 2500 X 3100	28000
GJR-2020	2000X20	2000	16/20	13/16	2"	1-3"	15	8	11	20000	25	2750 X 2200 X 2600	10000
GJR-2520	2500X20	2500	16/20	13/16	2"	1-3"	13	7	13	25000	30	3500 X 2600 X 2900	12000
GJR-3020	3000X20	3000	16/20	13/16	2"	1-3"	10	5	16	28000	30	4000 X 2600 X 2900	15000
GJR-4020	4000X20	4000	16/20	13/16	2"	1-3"	7	3	20	33000	30	5100 X 2750 X 2900	19000
GJR-5020	5000X20	5000	16/20	13/16	2"	1-3"	7	3	24	38000	40	5750 X 2800 X 3000	26000
GJR-6020	6000X20	6000	16/20	13/16	2"	1-3"	5	2	28	43000	40	6750 X 2900 X 3100	32500
GJR-2525	2500X25	2500	20/25	16/20	2"	1-3"	12	5	13	28000	40	3500 X 2750 X 3000	18000
GJR-3025	3000X25	3000	20/25	16/20	2"	1-3"	11	5	16	35000	40	4000 X 2750 X 3100	20000
GJR-4025	4000X25	4000	20/25	16/20	2"	1-3"	9	4	20	40000	50	5100 X 2800 X 3000	24000
GJR-5025	5000X25	5000	20/25	16/20	2"	1-3"	8	3	24	45000	60	5800 X 2900 X 3500	31000
GJR-6025	6000X25	6000	20/25	16/20	2"	1-3"	5	2	28	50000	60	6800 X 3000 X 4000	37000



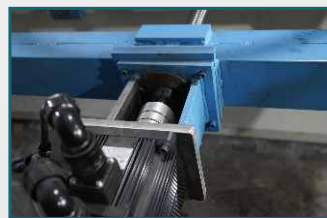
HYDRAULIC NC SHEARING MACHINE



SHEARING MACHINE

FEATURES

- RIGIDLY WELDED, MONO BLOCK STEEL FRAME FOR MINIMUM DEFLECTION UNDER FULL LOAD.
- NOISELESS OPERATION AND LEAST IMPACT LOADS ON BLADES AND FOUNDATIONS.
- INTERNATIONAL QUALITY HYDRAULIC COMPONENTS WITH SPECIALLY DESIGNED COMPACT MANIFOLDS GIVES SMOOTH, SILENT AND JERK LESS OPERATION.
- INTERNATIONAL QUALITY BRANDED ELECTRICAL COMPONENTS ENSURES TROUBLE FREE OPERATION OVER A PERIOD OF TIME.
- MOVABLE FOOT SWITCH TO OPERATE THE MACHINE FROM CONVENIENT POSITIONS.
- CYLINDERS FROM HIGH QUALITY FORGED STEEL AND ARE PRECISELY HONED. PISTONS ARE HARD CHROMED FOR LONGER LIFE.



MODEL	MACHINE SIZE	CUTTING LENGTH	CUTTING M.S. (MM)	CUTTING S.S. (MM)	RACK ANGLE MAX.	RACK ANGLE MIN.	MINIMUM STROKE	STROKE PER MINUTE	HOLD DOWNS	HOLDING FORCE KGS	MOTOR HP	DIMENSION MM (LXWXH)	APPROX. WEIGHT
GJR-1502	1500X2	1500	2/2	0,6/1	1°15	0,5-3"	25	25	5	1200	3	2200 X1300 X 1850	1350
GJR-2502	2500X2	2500	2/2	0,6/1	1°37	0,5-3"	20	20	8	1600	5	3000 X 1300 X 1850	2100
GJR-1504	1500X4	1500	3/4	2/3	1°37	0,5-3"	23	13	5	1600	5	2250 X 1300 X 1850	2100
GJR-2004	2000X4	2000	3/4	2/3	1°37	0,5-3"	19	10	9	2000	5	2750 X 1300 X 1850	2500
GJR-2504	2500X4	2500	3/4	2/3	1°37	0,5-3"	18	10	13	2300	5	3200 X 1850 X 1950	3500
GJR-3004	3000X4	3000	3/4	2/3	1°37	0,5-3"	15	9	16	2500	5	3700 X 1850 X 1950	4200
GJR-4004	4000X4	4000	3/4	2/3	1°37	0,5-3"	12	6	20	3200	7.5	4700 X 1300 X 2250	5500
GJR-1506	1500X6	1500	4/6	3/4	1°37	0,5-3"	23	13	5	4500	5	2250 X 1850 X 2050	3500
GJR-2006	2000X6	2000	4/6	3/4	1°37	0,5-3"	21	12	9	6200	7.5	2750 X 1850 X 2050	3600
GJR-2506	2500X6	2500	4/6	3/4	1°37	0,5-3"	19	10	13	8000	7.5	3300 X 2250 X 2400	4500
GJR-3006	3000X6	3000	4/6	3/4	1°37	0,5-3"	19	10	16	10000	10	3700 X 2250 X 2400	5500
GJR-4006	4000X6	4000	4/6	3/4	1°37	0,5-3"	15	6	20	12000	10	4700 X 2250 X 2400	7500
GJR-5006	5000X6	5000	4/6	3/4	1°37	0,5-3"	11	4	24	15000	10	5700 X 1900 X 2750	9000
GJR-6006	6000X6	6000	4/6	3/4	1°37	0,5-3"	10	3	28	15000	10	6700 X 1900 X 2850	11500
GJR-1508	1500X8	1500	6/8	4/6	1°45	0,5-3"	21	12	8	6500	10	2250 X 1900 X 2100	4000
GJR-2008	2000X8	2000	6/8	4/6	1°45	0,5-3"	21	11	11	6500	10	2750 X 1900 X 2100	4300
GJR-2508	2500X8	2500	6/8	4/6	1°45	0,5-3"	18	9	13	8500	15	3300 X 2250 X 2500	5500
GJR-3008	3000X8	3000	6/8	4/6	1°45	0,5-3"	16	8	16	10800	15	3800 X 2250 X 2500	6800
GJR-4008	4000X8	4000	6/8	4/6	2"	0,5-3"	22	6	20	13600	20	4800 X 2250 X 2500	8100
GJR-5008	5000X8	5000	6/8	4/6	2"	0,5-3"	18	4	24	16500	20	5700 X 2100 X 2500	10000
GJR-6008	6000X8	6000	6/8	4/6	2"	0,5-3"	14	3	28	19500	20	6700 X 2100 X 2500	13000
GJR-1510	1500X10	1500	8/10	6/8	2"	0,5-3"	23	13	8	10500	10	2250 X 2050 X 2200	4750
GJR-2010	2000X10	2000	8/10	6/8	2"	0,5-3"	17	9	11	12000	15	2750 X 2050 X 2200	6000
GJR-2510	2500X10	2500	8/10	6/8	2"	0,5-3"	17	9	13	16500	20	3300 X 2350 X 2600	7000
GJR-3010	3000X10	3000	8/10	6/8	2"	0,5-3"	15	8	16	18500	20	3800 X 2350 X 2600	7600
GJR-4010	4000X10	4000	8/10	6/8	2"	0,5-3"	16	4	20	23000	20	4800 X 2350 X 2800	10100
GJR-5010	5000X10	5000	8/10	6/8	2"	0,5-3"	12	3	24	27000	25	5750 X 2400 X 2900	13000
GJR-6010	6000X10	6000	8/10	6/8	2"	0,5-3"	8	2	28	31000	25	6750 X 2500 X 3100	16000
GJR-1513	1500X13	1500	10/13	8/10	2"	0,5-3"	18	10	8	10500	15	2250 X 2050 X 2300	5400
GJR-2013	2000X13	2000	10/13	8/10	2"	0,5-3"	15	8	11	13000	15	2750 X 2050 X 2300	6500
GJR-2513	2500X13	2500	10/13	8/10	2"	0,5-3"	13	7	13	17500	20	3300 X 2500 X 2600	7500
GJR-3013	3000X13	3000	10/13	8/10	2"	0,5-3"	12	7	16	20000	20	3800 X 2500 X 2600	9500
GJR-4013	4000X13	4000	10/13	8/10	2"	0,5-3"	13	6	20	25000	25	4800 X 2500 X 2600	11500
GJR-5013	5000X13	5000	10/13	8/10	2"	0,5-3"	10	5	24	30000	30	5750 X 2500 X 2800	14500
GJR-6013	6000X13	6000	10/13	8/10	2"	0,5-3"	8	3	28	35000	30	6750 X 2500 X 3100	22000
GJR-2016	2000X16	2000	13/16	10/13	2"	1-3"	15	8	11	16000	20	2750 X 2200 X 2500	9000
GJR-2516	2500X16	2500	13/16	10/13	2"	1-3"	13	7	13	20000	25	3350 X 2600 X 2800	10000
GJR-3016	3000X16	3000	13/16	10/13	2"	1-3"	11	6	16	25000	25	3800 X 2600 X 2800	12000
GJR-4016	4000X16	4000	13/16	10/13	2"	1-3"	10	4	20	30000	30	4800 X 2600 X 2900	16000
GJR-5016	5000X16	5000	13/16	10/13	2"	1-3"	9	4	24	35000	40	5750 X 2600 X 3100	20000
GJR-6016	6000X16	6000	13/16	10/13	2"	1-3"	7	3	28	40000	40	6750 X 2500 X 3100	28000
GJR-2020	2000X20	2000	16/20	13/16	2"	1-3"	15	8	11	20000	25	2750 X 2200 X 2600	10000
GJR-2520	2500X20	2500	16/20	13/16	2"	1-3"	13	7	13	25000	30	3500 X 2600 X 2900	12000
GJR-3020	3000X20	3000	16/20	13/16	2"	1-3"	10	5	16	28000	30	4000 X 2600 X 2900	15000
GJR-4020	4000X20	4000	16/20	13/16	2"	1-3"	7	3	20	33000	30	5100 X 2750 X 2900	19000
GJR-5020	5000X20	5000	16/20	13/16	2"	1-3"	7	3	24	38000	40	5750 X 2800 X 3000	26000
GJR-6020	6000X20	6000	16/20	13/16	2"	1-3"	5	2	28	43000	40	6750 X 2900 X 3100	32500
GJR-2525	2500X25	2500	20/25	16/20	2"	1-3"	12	5	13	28000	40	3500 X 2750 X 3000	18000
GJR-3025	3000X25	3000	20/25	16/20	2"	1-3"	11	5	16	35000	40	4000 X 2750 X 3100	20000
GJR-4025	4000X25	4000	20/25	16/20	2"	1-3"	9	4	20	40000	50	5100 X 2800 X 3000	24000
GJR-5025	5000X25	5000	20/25	16/20	2"	1-3"	8	3	24	45000	60	5800 X 2900 X 3500	31000
GJR-6025	6000X25	6000	20/25	16/20	2"	1-3"	5	2	28	50000	60	6800 X 3000 X 4000	37000

OVERCRANK SHEARING MACHINE



SHEARING MACHINE

TECHNICAL SPECIFICATIONS

"WE ALSO DESIGN & MANUFACTURE MACHINES AS PER CUSTOMER REQUIREMENT."

DIMENSIONS	SIZE	KOOV-4				KOOV-5				KOOV-6.5				KOOV-8				KOOV-10							
SHEARING LENGTH	MM	1250				1500				2000				2500				3000							
SHEARING CAPACITY	MM	6	8	10	12	6	8	10	12	6	8	10	12	6	8	10	12	6	8	10	12				
POWER REQUIRED RPM	HP 1440	7.5	7.5	10	15	7.5	10	15	15	10	12.5	15	20	10	15	20	25	15	20	25	30				
STROKES PER MINUTE	NOS.	50				45				50				45				50				45			
MAX. BACKGUAGE	MM	800				800				800				800				800							
ADJUSTMENT																									
SIZE OF BLADE	MM	1270X75X18/25				1525X75X18/25				1016X75X18/25				1270X75X18/25				1525X75X18/25							
NO. OF BLADE	PCS.	2				2				4				4				4							
CUTTING LENGTH	MM	1250				1250				2000				2500				3000							
APPROX FLOOR AREA REQUIRED LXWXH	MM	2300X2000X2150				2600X2000X2150				3000X2400X2400				3650X2400X2400				4100X2600X2600							



UNDERCRANK SHEARING MACHINE



SHEARING MACHINE

TECHNICAL SPECIFICATIONS

“WE ALSO DESIGN & MANUFACTURE MACHINES AS PER CUSTOMER REQUIREMENT.”

DIMENSIONS	SIZE	KOUC-4	KOUC-5	KOUC-6.5	KOUC-8	KOUC-10
SHEARING LENGTH	MM	1250	1500	2000	2500	3000
SHEARING CAPACITY	MM	4	4	4	4	4
POWER REQUIRED	HP	5	7.5	7.5	10	10
	RPM	1440	1440	1440	1440	1440
STROKES PER MINUTE	NOS	55	55	50	50	50
MAX. BACKGUAGE ADJUSTMENT	MM	450	450	550	550	550
SIZE OF BLADE	MM	1270X62X16	1525X62X16	1016X62X16	1270X62X16	1525X62X16
NO. OF BLADE	PCS.	2	2	4	4	4
CUTTING LENGTH	MM	1250	1500	2000	2500	3000
APPROX FLOOR AREA REQUIRED LXWXH	MM	2550X1550X1500	2800X1550X1500	3300X1550X1500	3800X1550X1500	4400X1550X1500



ROTARY SHEARING MACHINE



SHEARING MACHINE

TECHNICAL SPECIFICATIONS

"WE ALSO DESIGN & MANUFACTURE MACHINES AS PER CUSTOMER REQUIREMENT."

MODEL	WIDTH SIZES	THICKNESS	THICKNESS	THICKNESS
KO12	1" TO 12"	UPTO 4MM	UPTO 6MM	UPTO 9MM
KO18	1" TO 18"	UPTO 4MM	UPTO 6MM	UPTO 9MM
KO24	1" TO 24"	UPTO 4MM	UPTO 6MM	UPTO 9MM
KO30	1" TO 30"	UPTO 4MM	UPTO 6MM	UPTO 9MM
KO36	1" TO 36"	UPTO 4MM	UPTO 6MM	UPTO 9MM

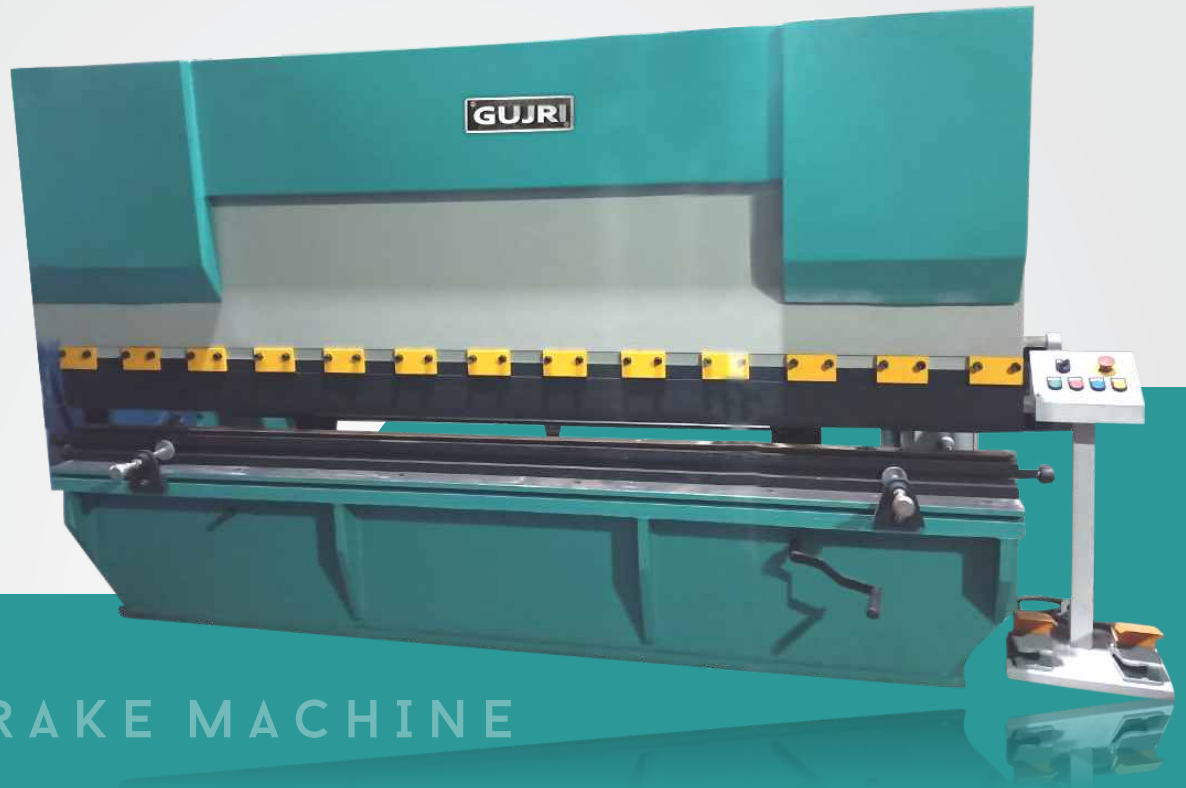
FEATURES

- ZERO MAINTANCE COST
- UNLIMITED LENGTH TO SHEAR
- POCKET FRIENDLY
- COMPACT IN SIZE
- CAN CUT SCRAP ALSO
- HAVE MOBILIBILTY(CAN MOVE NEAR STOCK)



LIFETIME WARRANTY

HYDRAULIC PRESS BRAKE MACHINE



PRESS BRAKE MACHINE

FEATURES

- FAST APPROACH & FAST RETURN SPEED TO SAVE CYCLE TIME, SLOW PRESSING SPEED FOR BETTER STROKE CONTROL & BENDING ACCURACY, ENSURES HIGH PRODUCTIVITY
- REPEATABILITY FOR RAM POSITION $\pm 0,05\text{MM}$
- COMPACT CYLINDERS & LOW PRESSURE SYSTEM DUE TO REAR CYLINDERS. ALSO IT GIVES BETTER RIGIDITY & LOAD CARRYING CAPACITY AGAINST FATIGUE FAILURE
- POSITIVE SYNCHRONISATION OF CYLINDERS WITH WELDED TORQUE TUBE GIVES BETTER BENDING ACCURACY ON BOTH ENDS
- MOVING WORK STATION WITH MANUAL, SINGLE CYCLE & AUTOMATIC MODE FOR EASY OPERATION WITH EMERGENCY STOP BUTTON
- NC UPGRADATION POSSIBLE ON SITE
- ALL ELECTRICAL & HYDRAULIC COMPONENT FROM REPUTED MAKE
- HYDRAULIC CYLINDERS MADE FROM SEAMLESS HONED TUBE, HARDENED & GROUNDED CHROME PLATED PISTON ROD FITTED WITH TWIN TYPE ZERO LEAK PU SEALS
- SUITABLE FOR UPGRADATION WITH SPECIAL OPTIONAL FEATURES



MODEL	MACHINE SIZE	TONNAGE	TABLE LENGTH	TABLE WIDTH	OPEN HEIGHT	THROAT DEPTH	CLEAR PASS	RAM STROKE	RAM SPEED	MOTOR	PACKING DIMENSION MM (LXWXH)	APPROX. WEIGHT
GJRI-1520	1500 X 2MM	20	1550	125	250	200	1200	100	35-9-35	2	1700X1050X1900	1500
GJRI-2030	2000 X 2MM	30	2100	125	250	200	1500	100	30-7-30	3	2200X1150X1900	1750
GJRI-2540	2500 X 2MM	40	2550	150	250	200	2050	100	40-8-40	3	2700X1150X1900	2500
GJRI-1550	1500 X 4MM	50	1550	150	250	200	1200	100	35-7-35	5	1700X1050X1900	2300
GJRI-2050	2000 X 3MM	50	2100	150	250	200	1500	100	35-7-35	5	2200X1050X1900	2600
GJRI-2065	2000 X 4MM	65	2100	150	250	200	1500	100	30-5-30	5	2200X1500X1900	2750
GJRI-2565	2500 X 3MM	65	2550	150	250	200	2050	100	30-5-30	5	2700X1200X2000	3600
GJRI-2080	2000 X 5MM	80	2100	180	350	250	1500	150	40-6-47	7.5	2200X1500X2000	3700
GJRI-2580	2500 X 4MM	80	2550	180	350	250	2050	150	40-6-47	7.5	2700X1550X2300	4500
GJRI-3080	3000 X 3MM	80	3150	180	350	250	2550	150	40-6-47	7.5	3350X1550X2300	4800
GJRI-2100	2000 X 6MM	100	2100	180	350	250	1500	150	40-6-47	7.5	2200X1550X2300	4500
GJRI-2510	2500 X 5MM	100	2550	180	350	250	2050	150	40-6-47	7.5	2700X1550X2300	5100
GJRI-3100	3000 X 4MM	100	3150	180	350	250	2550	150	40-6-47	7.5	3350X1550X2300	5700
GJRI-4100	4000 X 3MM	100	4100	180	350	250	3150	150	40-6-47	7.5	4250X1650X2300	6800
GJRI-2512	2500 X 6MM	125	2550	180	350	250	2050	150	40-6-40	10	2750X1650X2500	5850
GJRI-3125	3000 X 5MM	125	3150	180	350	250	2550	150	40-6-40	10	3350X1650X2500	6800
GJRI-4125	4000 X 4MM	125	4100	180	350	250	3150	150	40-6-40	10	4250X1650X2500	8000
GJRI-2516	2500 X 8MM	160	2550	230	350	300	2050	150	35-6-40	15	2750X1800X2500	6800
GJRI-3160	3000 X 6MM	160	3150	230	350	300	2550	150	35-6-40	15	3350X1650X2500	7800
GJRI-4160	4000 X 5MM	160	4100	230	350	300	3150	150	35-6-40	15	4250X1650X2500	10000
GJRI-2520	2500 X 10MM	200	2550	230	400	300	2050	200	35-6-40	20	2750X2050X2750	10000
GJRI-3200	3000 X 8MM	200	3150	230	400	300	2550	200	35-7-35	20	3350X2050X2750	11000
GJRI-4200	4000 X 6MM	200	4100	230	400	300	3150	200	35-7-35	20	4350X2050X2750	12500
GJRI-5200	5000 X 5MM	200	5100	230	400	300	4150	200	35-7-35	20	5400X2050X2750	14500
GJRI-2525	2500 X 12MM	250	2550	300	400	300	2050	200	35-7-35	25	2850X2200X2800	10000
GJRI-3250	3000 X 10MM	250	3150	300	400	300	2550	200	35-6-40	25	3350X2200X2800	11500
GJRI-4250	4000 X 8MM	250	4100	300	400	300	3150	200	36-6-40	25	4400X2100X2900	12500
GJRI-5250	5000 X 6MM	250	5100	300	400	300	4150	200	35-6-40	25	5600X2100X2900	14000
GJRI-3300	3000 X 12MM	300	3150	300	400	300	2550	200	30-6-35	30	3350X2150X2900	13000
GJRI-4300	4000 X 10MM	300	4100	300	400	300	3150	200	30-6-35	30	4400X2150X2900	14000
GJRI-6300	6000 X 6MM	300	6100	300	400	300	5150	200	30-6-35	30	6500X2150X2900	16000
GJRI-5340	5000 X 8MM	340	5100	350	500	300	4150	250	30-6-35	40	5500X2150X2900	17500
GJRI-3400	3000 X 16MM	400	3150	350	500	350	2550	250	30-6-35	40	3400X2200X2900	16000
GJRI-4400	4000 X 12MM	400	4100	350	500	350	2150	250	30-6-35	40	4400X2200X3050	19000
GJRI-6400	6000 X 8MM	400	6100	350	500	350	5150	250	30-6-35	40	6350X2350X3200	23000
GJRI-5420	5000 X 10MM	420	5100	350	500	350	4150	250	30-6-35	40	5500X2350X3300	21500
GJRI-5500	5000 X 12MM	500	5100	350	500	350	4150	250	25-5-30	40	5500X2500X4000	26000
GJRI-6500	6000 X 10MM	500	6100	350	500	350	5150	250	25-5-30	40	6500X2500X4000	22000
GJRI-4540	4000 X 16MM	540	4100	350	500	350	3150	250	25-5-30	50	4500X2600X4150	23000
GJRI-6600	6000 X 12MM	600	6100	350	500	350	5150	250	25-5-30	50	6500X2750X4500	26000
GJRI-5670	5000 X 16MM	670	5100	350	500	350	4150	250	25-5-30	60	5350X2900X5100	31500

NC FRONT CYLINDER PRESS BRAKE MACHINE



PRESS BRAKE MACHINE

FEATURES

- SUITABLE FOR COMPLEX JOB BENDING
- QUICK CHANGEOVER FOR SAMPLE PRODUCTION & MASS PRODUCTION
- TWO AXIS AUTOMATIC CONTROL – BENDING DEGREE (Y AXIS) & BACK GAUGE (X-AXIS) PROGRAM
- MULTIPLE BENDS WITH DIFFERENT BACK GAUGE POSITIONS CAN BE PROGRAMMED
- 200 PROGRAMS & 24 BENDS WITH INDIVIDUAL BACK GAUGE POSITIONS IN ONE PROGRAM
- PROGRAMABLE BACK GAUGE RETRACTION
- PROGRAMABLE ANGLE CORRECTION & BACK GAUGE CORRECTION
- SUITABLE FOR UPGRADATION WITH SPECIAL OPTIONAL FEATURES

PERFORMANCE DRIVEN
MACHINES



TECHNICAL SPECIFICATIONS

"WE ALSO DESIGN & MANUFACTURE MACHINES AS PER CUSTOMER REQUIREMENT."

MODEL	BENDING CAPACITY (KN)	WORKING LENGTH (MM)	INSIDE LENGTH (MM)	THROAT DEPTH (MM)	DAY LIGHT (MM)	SLIDE STROKE (MM)	MOTOR (HP)	STROKE ADJUSTMENT	DOWN STROKE SPEED	WORKING SPEED (MM/SEC)	UP STROKE SPEED (MM/SEC)	APPROX WEIGHT (KG.)
GJRI-401	400	1600 MM	1250 MM	250	375	120	5HP	100	80	8	60	2500
GJRI-521	500	2100 MM	1600 MM	250	375	120	5HP	100	80	8	60	2900
GJRI-526	500	2600 MM	2100 MM	250	375	120	5HP	100	80	8	60	3300
GJRI-626	630	2600 MM	2100 MM	250	375	120	5HP	100	80	8	60	3800
GJRI-826	800	2600 MM	2100 MM	250	375	120	7.5HP	100	80	8	80	4700
GJRI-102	1000	2600 MM	2100 MM	300	400	160	10 HP	160	80	8	80	5700
GJRI-132	1350	2600 MM	2100 MM	300	400	160	10 HP	160	80	8	80	6500
GJRI-103	1000	3200 MM	2600 MM	300	400	160	10 HP	160	80	8	80	6100
GJRI-133	1350	3200 MM	2600 MM	300	400	160	10 HP	160	80	8	80	7000
GJRI-153	1500	3200 MM	2600 MM	300	400	160	15 HP	160	80	8	80	8000
GJRI-173	1750	3200 MM	2600 MM	300	400	160	15 HP	150	80	8	80	9500
GJRI-2003	2000	3200 MM	2600 MM	400	550	200	20 HP	180	80	8	80	10500
GJRI-2503	2500	3200 MM	2600 MM	400	550	250	25 HP	200	80	8	80	11500
GJRI-3003	3000	3200 MM	2600 MM	400	550	250	30 HP	200	80	8	80	13000
GJRI-104	1000	4200 MM	3100 MM	300	400	160	10 HP	150	80	8	80	7500
GJRI-134	1350	4200 MM	3100 MM	300	400	160	10 HP	150	80	8	80	8500
GJRI-154	1500	4200 MM	3100 MM	300	400	160	15 HP	150	80	8	80	10000
GJRI-174	1750	4200 MM	3100 MM	300	400	160	15 HP	150	80	8	80	11000
GJRI-2004	2000	4200 MM	3100 MM	400	515	200	20 HP	180	80	8	80	13000
GJRI-2504	2500	4200 MM	3100 MM	400	515	250	25 HP	200	80	8	80	14000
GJRI-3004	3000	4200 MM	3100 MM	400	515	250	30 HP	200	60	7	80	18000
GJRI-4004	4000	4200 MM	3100 MM	400	515	250	40 HP	200	60	7	70	21500
GJRI-2505	2500	5100 MM	4100 MM	400	515	250	25 HP	180	60	6	60	15000
GJRI-3305	3300	5100 MM	4100 MM	400	515	250	40 HP	180	60	6	60	16500
GJRI-4205	4200	5100 MM	4100 MM	400	515	250	40 HP	180	60	6	60	19000
GJRI-5005	5000	5100 MM	4100 MM	400	515	250	50 HP	180	60	6	60	25000
GJRI-2506	2500	6100 MM	5100 MM	400	600	250	25 HP	180	60	6	60	21000
GJRI-3006	3000	6100 MM	5100 MM	400	600	250	40 HP	180	60	6	60	25000
GJRI-4006	4000	6100 MM	5100 MM	400	515	250	40 HP	180	60	6	60	30000
GJRI-5006	5000	6100 MM	5100 MM	400	515	250	50 HP	180	60	6	60	35000



3 & 4 ROLL PLATE BENDING MACHINE



BENDING MACHINE

TECHNICAL SPECIFICATIONS

“WE ALSO DESIGN & MANUFACTURE MACHINES AS PER CUSTOMER REQUIREMENT.”

MODEL	WORKING LENGTH (MM)	MAX. THICKNESS	MAX. PRE BENDING THICKNESS	TOP ROLL	SIDE ROLLS	POWER (HP)	BENDING DIA. DIMENSION
GR-XL SERIES 3-620	2100	6	4	170	170	5	
GR-XL SERIES 3-820	2100	8	6	200	180	7.5	
GR-XL SERIES 3-1020	2100	10	8	210	190	7.5	MINIMUM ID
GR-XL SERIES 3-1320	2100	13	10	240	210	7.5	Ø TOP ROLL X 3
GR-XL SERIES 3-1620	2100	16	12	280	250	10	AL 240 N/MM2
GR-XL SERIES 3-2020	2100	20	16	310	280	15	
GR-XL SERIES 3-2520	2100	25	20	340	310	20	
GR-XL SERIES 3-625	2600	6	4	190	170	5	
GR-XL SERIES 3-825	2600	8	6	210	190	7.5	
GR-XL SERIES 3-1025	2600	10	8	240	210	10	MINIMUM ID
GR-XL SERIES 3-1325	2600	13	10	270	250	12.5	Ø TOP ROLL X 3
GR-XL SERIES 3-1625	2600	16	12	300	280	15	AL 240 N/MM2
GR-XL SERIES 3-2025	2600	20	15	340	310	20	
GR-XL SERIES 3-2525	2600	25	18	370	350	25	
GR-XL SERIES 3-630	3100	6	4	210	200	7.5	
GR-XL SERIES 3-830	3100	8	6	240	210	10	
GR-XL SERIES 3-1030	3100	10	8	270	250	10	MINIMUM ID
GR-XL SERIES 3-1330	3100	13	10	300	270	15	Ø TOP ROLL X 3
GR-XL SERIES 3-1630	3100	16	12	330	300	20	AL 240 N/MM2
GR-XL SERIES 3-2030	3100	20	16	370	340	25	
GR-XL SERIES 3-2530	3100	25	20	400	370	30	

CIRCLE CUTTING MACHINE



CIRCLE CUTTING

TECHNICAL SPECIFICATIONS

"WE ALSO DESIGN & MANUFACTURE MACHINES AS PER CUSTOMER REQUIREMENT."

MACHINE LENGTH	THICKNESS	THICKNESS
1 FEET	UPTO 2MM, 3MM	UPTO 6MM
2 FEET	UPTO 2MM, 3MM	UPTO 6MM
4 FEET	UPTO 2MM, 3MM	UPTO 6MM



DRUM FLATENING MACHINE



TECHNICAL INFORMATION

THE DRUM CUTTER AND FLATENING MACHINE ALLOWS DRUMS TO BE CONVERTED INTO METAL SHEET. ONE SIDE IS EQUIPPED WITH AN EFFICIENT POWERED ROTATING CUTTING BLADE AND ON THE LEFT SIDE ENABLE THE DRUM TO CUT FROM CENTRE ONCE DRUM IS CUT FROM CENTRE ITS TIME TO CONVERT THAT DRUM INTO METAL SHEET WITH THE HELP OF THE FLATTEN MACHINE.





THE DRUM CUTTER AND BEADING MACHINE (CUTTER CURLER) ALLOWS DRUMS, WHICH MAY OTHERWISE BE DISCARDED DUE TO LEAKS OR FOR OTHER REASONS, TO BE CONVERTED INTO OPEN TOP DRUMS. ONE SIDE IS EQUIPPED WITH AN EFFICIENT POWERED ROTATING CUTTING BLADE AND ON THE OPPOSITE SIDE IS A CURLER/BEADING SYSTEM, WHICH FORMS A SAFE EDGE TO THE CUT END. LIDS THAT HAVE BEEN REMOVED AUTOMATICALLY FORM A SHAPE DURING CUTTING AND THIS ALLOWS THEM TO BE USED FOR LIDS FOR OPEN TOP DRUMS WHEN FITTED WITH A NEW RUBBER SEAL AND CLIP. AN INTERNAL POLYTHENE BAG IS OFTEN USED FOR HOLDING POWDER MATERIALS.

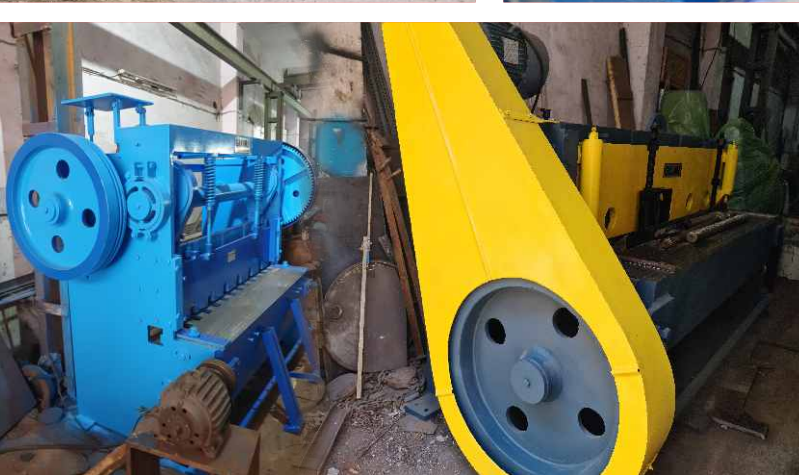
TECHNICAL INFORMATION

PRODUCTION RATE – UP TO 60 DRUMS PER HOUR

ELECTRICAL TYPE—MECHANICAL AND HYDRAULIC









VAST PRODUCT
KNOWLEDGE



HIGH
PERFORMANCE



ADVANCE
TECHNOLOGY



CUSTOMER
SATISFACTION



We Focus on
Time & Quality...



HEAD OFFICE

588 OVERLOCK ROAD MILLER
GANJ, Ludhiana - 141003,
Punjab, India.

FACTORY

Dehlon Road, Sahnewal,
Ludhiana - 141120, Punjab,
India.



+91-95927-10000
+91-93013-00003



gujripvtltd@gmail.com
sales@gujriindustries.com